

EQUIPMENT SCHEDULE

ITEM NO.	NO. REQ'D	DESCRIPTION	WATER				ELECTRICAL					GAS			RESPONSIBILITY				MANUFACTURER	ITEM NO.					
			HOT	COLD	WASTE	FEED MTG. HT.	WATTS	HP	V/PH	AMPS	CONN.	MTG. HT.	SIZE	BTU'S	MTG. HT.	FURN. BY	INSTALL. BY	CONN. MC			PC	EC			
100	1	36" CHAR-GRILL																			BAKERS PRIDE	100			
101	1	25'-8" EXHAUST HOOD (LIGHTS)					600			115/1				DIRECT	CEILING							CHEF-AIR	101		
	2	EXHAUST FAN								2.0				DIRECT	ROOF							CHEF-AIR			
	1	MAKE UP AIR								208/3				DIRECT	ROOF	1"	300,000	12" AFF				CHEF-AIR			
102	1	6-BURNER RANGE W/24" GRIDDLE (RIGHT SIDE)										3/4"	278,000		12" AFF							IMPERIAL	102		
103	1	48" CHAR-GRILL										3/4"	165,000		12" AFF							BAKERS PRIDE	103		
104	2	75 LB. FRYER										3/4"	175,000		12" AFF							IMPERIAL	104		
105	1	60" SALAMANDER										3/4"	55,000		12" AFF							IMPERIAL	105		
106	1	DOUBLE STACK CONVECTION OVEN						1/4	115/1	9.0			CORD	12"A.F.F.	3/4"	(2)70,000	53" AFF 27" AFF					IMPERIAL	106		
107	1	MICROWAVE OVEN					1000			115/1				CORD	66"A.F.F.							AMANA	107		
108	LOT	GAS HOSES																				DORMONT	108		
109	0	SPARE																					109		
110	0	SPARE																					110		
200	1	WALK-IN COOLER (LIGHTS)					100			120/1				DIRECT	CEILING								200		
	1	COOLER - COMPRESSOR						1-1/2	208/1	30.0				DIRECT	ROOF								ARCTIC		
	1	COOLER - EVAPORATOR			F.D.				120/1	3.2				DIRECT	CEILING								ARCTIC		
	1	WALK-IN FREEZER (LIGHTS & DOOR HEATER)					700			208/1	15.0			DIRECT	CEILING								ARCTIC		
	1	FREEZER - COMPRESSOR						1-1/2	208/1	20.0				DIRECT	ROOF								ARCTIC		
	1	FREEZER - EVAPORATOR			F.D.				208/1	11.7				DIRECT	CEILING								ARCTIC		
201	1	ICE MACHINE W/BIN	1/2"		F.D.	42"A.F.F.	1.5	208/3	11.8				DIRECT	50.5"A.F.F.									ICE-O-MATIC	201	
202	1	27" WORK TOP REFRIGERATOR W/DOOR					1/5	115/1	4.9				CORD	12"A.F.F.									TRUE	202	
203	1	SINGLE DOOR FREEZER					1/2	115/1	10.4				CORD	12"A.F.F.									TRUE	203	
204	1	27" REFRIG. SANDWICH PREP. W/DRAWERS					1/5	115/1	4.9				CORD	12"A.F.F.									TRUE	204	
205	1	27" REFRIG. SANDWICH PREP. W/DRAWERS					1/5	115/1	4.9				CORD	12"A.F.F.									TRUE	205	
206	1	TWO DOOR REFRIGERATOR					1/2	115/1	9.1				CORD	12"A.F.F.									TRUE	206	
207	1	ICE CREAM FREEZER					1/5	115/1	1.8				CORD	12"A.F.F.						OWNER	OWNER		SILVER KING	207	
208	1	50" MUG FROSTER					1/3	120/1	7.6				CORD	12"A.F.F.									TRUE	208	
209	1	65" BOTTLE BOX					1/3	120/1	7.3				CORD	24"A.F.F.									TRUE	209	
210	1	60" KEG COOLER			OPEN		1/3	120/1	8.5				CORD	24"A.F.F.									TRUE	210	
211	2	72" FROST TOP			OPEN		1/4	115/1	7.1				CORD	12"A.F.F.									RANDELL	211	
212	0	SPARE																						212	
300	6	HEAT LAMPS					1400			208/1	10.6			DIRECT	30"A.C.H.								HATCO	300	
301	1	4 WELL STEAM TABLE W/DRAINS AND WATER	1/2"		F.D.					208/1	15.87			CORD	12"A.F.F.									SUPREME METAL	301
302	1	VERTICAL TOASTER W/BUTTER WHEEL								120/1	14.1			CORD	12"A.F.F.									ROUNDUP	302
400	LOT	WIRE SHELVEING-COOLER /FREEZER																						NEXEL	400
401	LOT	WIRE SHELVEING-DRY STORAGE																						NEXEL	401
402	1	SECURITY CAGE-MEAT LOCKER																						NEXEL	402
403	1	SECURITY CAGE-LIQUOR STORAGE																						NEXEL	403
404	2	SLANT RACK																						FABRICATED	404
405	4	36" WALL SHELF-WIRE SHELVEING																						ADVANCE	405
406	1	WIRE SHELVEING (4 SHELVES, 4 POSTS)																						NEXEL	406
407	1	36" WALL SHELF-STAINLESS STEEL																						TURBO AIR	407
408	1	24" WALL SHELF-STAINLESS STEEL																						TURBO AIR	408
409	1	48" WALL SHELF-STAINLESS STEEL																						TURBO AIR	409
410	2	60" WALL SHELF-STAINLESS STEEL																						TURBO AIR	410
411	2	76" WALL SHELF-STAINLESS STEEL																						TURBO AIR	411
412	1	48" WALL SHELF-STAINLESS STEEL																						TURBO AIR	412
413	1	WIRE SHELVEING (4 SHELVES, 4 POSTS)																						NEXEL	413
414	1	18" X 279" DOUBLE TIER S/S OVERSHELF							208/1	200				DIRECT	42"A.F.F.									FABRICATED	414
415	1	POST MIX RACK	1/2"						115/1	6.6				CORD	12"A.F.F.				OTHERS	OTHERS				BY VENDOR	415
416	1	WIRE SHELVEING (4 SHELVES, 4 POSTS)																						NEXEL	416
417	1	DISH SORTING SHELF																						ADVANCE	417
418	2	BREAD RACK																	OTHERS	OTHERS				BY OTHERS	418
419	2	48" DUNNAGE RACK																						CHANNEL	419
420	1	MICROWAVE SHELF																						ADVANCE	420
421	1	72" WALL SHELF-STAINLESS STEEL																						TURBO AIR	421

NOTES:

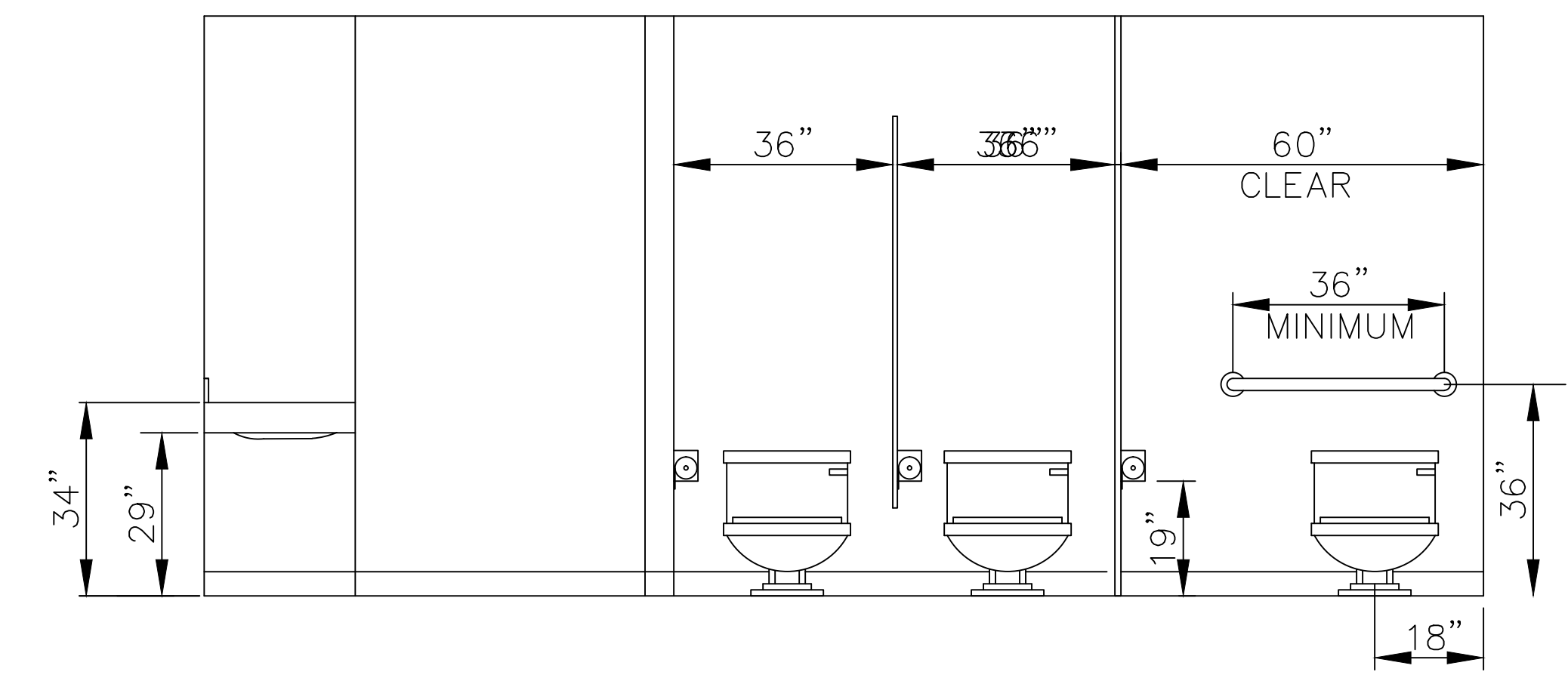
- MECHANIC'S SHOWN ON THIS PLAN ARE FOR NEW EQUIPMENT ONLY. MECHANIC'S FOR OWNER SUPPLIED OR OWNER INSTALLED EQUIPMENT MUST BE VERIFIED BY THE RESPONSIBLE PARTIES.
- MECHANIC'S SHOWN ON THIS PLAN ARE FOR SINGLE QUANTITIES. MULTIPLY LOADS BY QUANTITY FOR MULTIPLE UNITS.
- FOR ITEMS 101 AND 200. THE ELECTRICAL CONTRACTOR IS TO VERIFY WITH THE KEC PRIOR TO ROUGH-IN WIRING SINCE SYSTEMS REQUIREMENTS VARY WITH LOCATIONS.
- GC TO PROVIDE PLYWOOD BACKING FOR THE FOLLOWING ITEMS 404, 405, 407, 408, 409, 410, 411, 412, 417, 420, 606 AND 609.
- ITEM 414 IS TO BE PROVIDED BY FEC WITH A 200 AMP SUBPANEL FOR SINGLE POINT ELECTRICAL CONNECTIONS FOR ITEMS 203, 204, 205, 300 AND 301.

Chef Supply

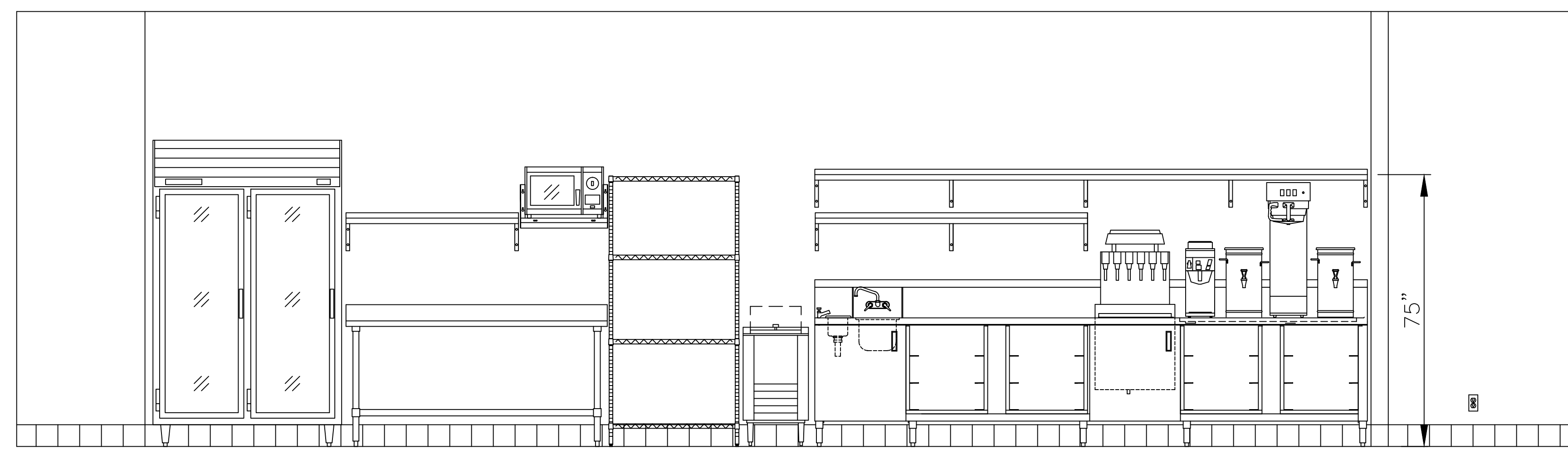
1512 W. Main Steet
Louisville,
Kentucky, 40202
502.585.1907
Fax: 502.585.1961

THESE LAYOUTS ARE THE PROPERTY OF CHEF SUPPLY. THESE LAYOUTS ARE FOR REFERENCE ONLY. CHEF SUPPLY IS NOT AN ENGINEERING FIRM AND DOES NOT ACCEPT THE RESPONSIBILITY OF ANY REVISIONS OR ISSUES WITH ELECTRICAL, PLUMBING, OR CODE ISSUES.

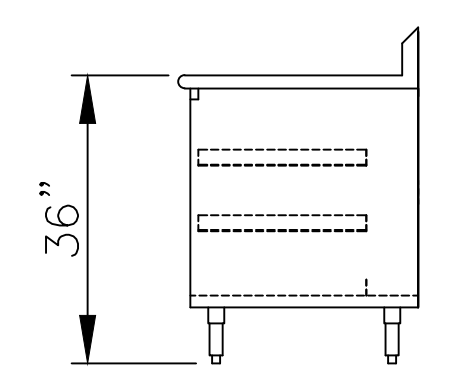
Cattlemen's Roadhouse
Sheperdsville, Kentucky



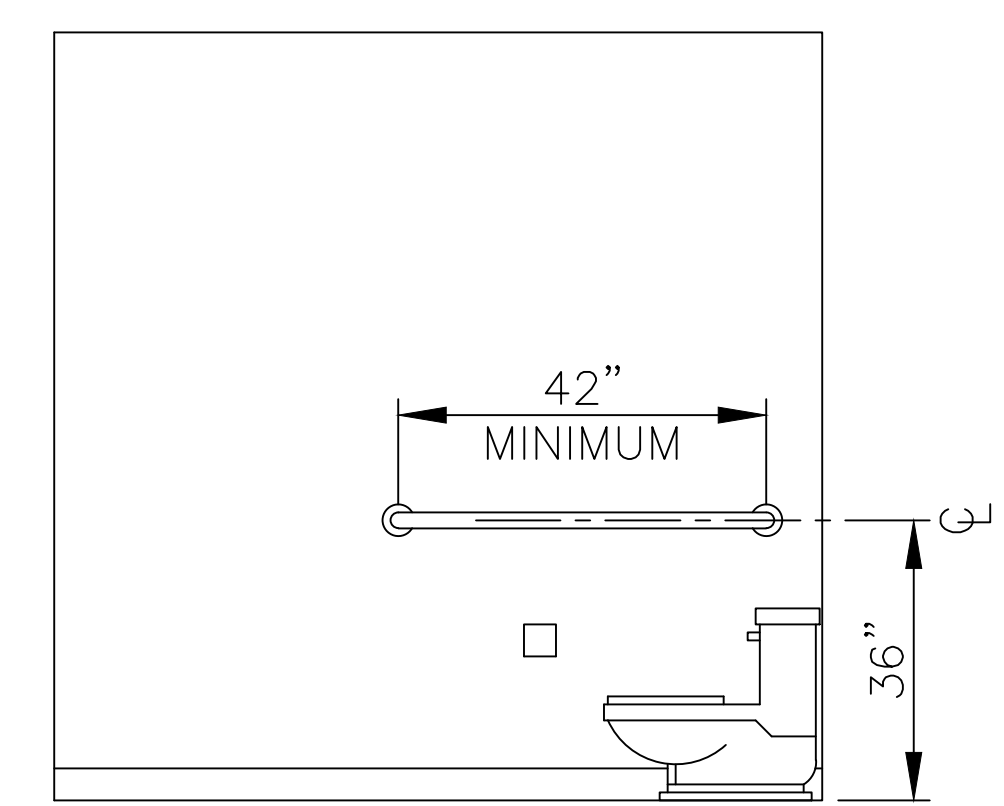
ELEVATION A
SCALE: 1/2" = 1'-0"



ELEVATION C
SCALE: 1/2" = 1'-0"



END VIEW
SCALE: 1/2" = 1'-0"



ELEVATION B
SCALE: 1/2" = 1'-0"

EQUIPMENT SCHEDULE

number: Cattlemen-1dwg
date: Sept. 17, 2010
revised:
by: Scott W. Rudd
checked:
by:

drawing no.
EQ-2
sheet no.
2 of 3