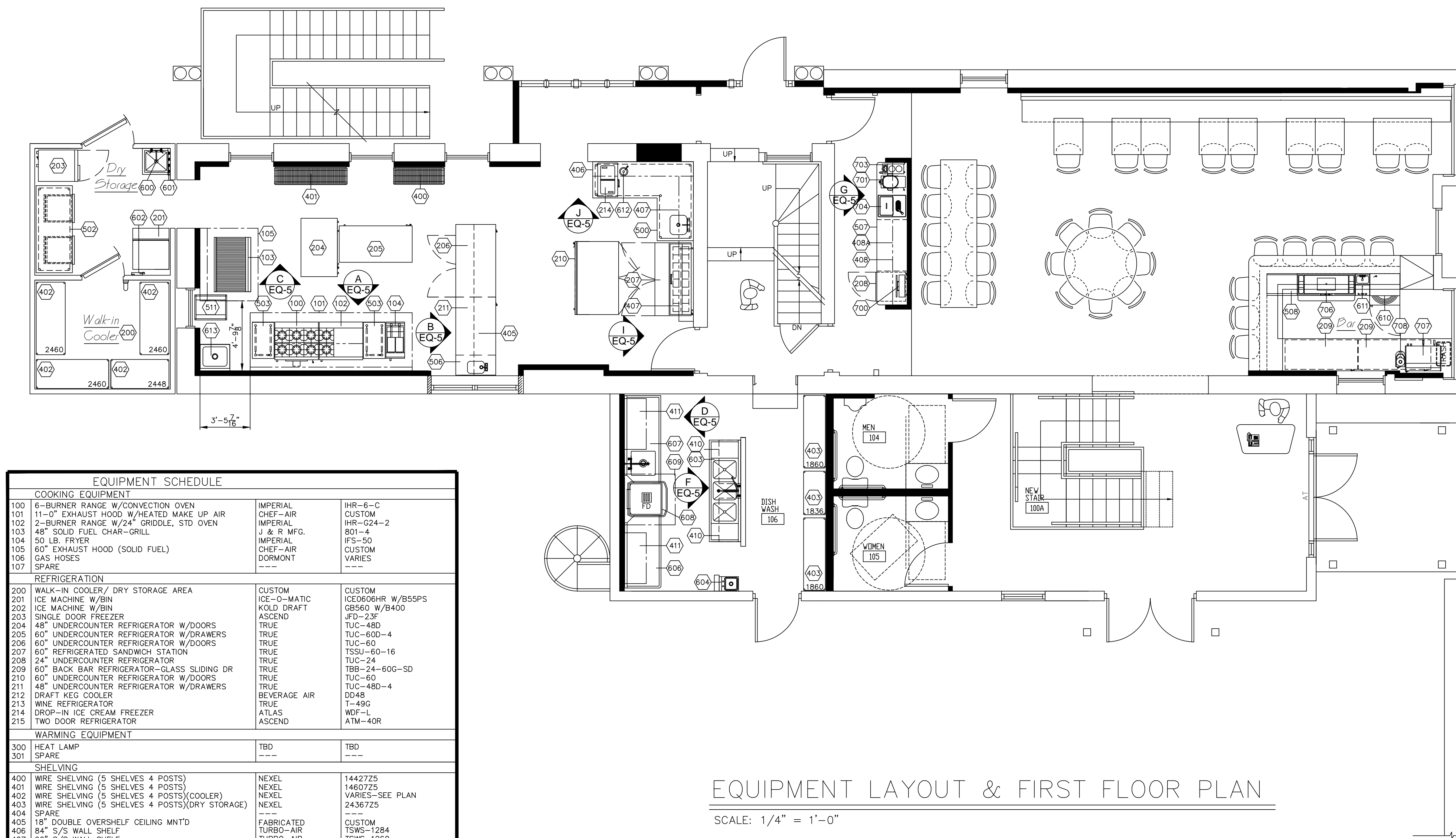


THESE LAYOUTS ARE THE PROPERTY OF CHEF SUPPLY. THESE LAYOUTS ARE FOR REFERENCE ONLY. CHEF SUPPLY IS NOT AN ENGINEERING FIRM AND DOES NOT ACCEPT THE RESPONSIBILITY OF ANY RESPECIFICATIONS DEALING WITH ELECTRICAL, PLUMBING, OR CODE ISSUES.

Decca
812 E. Market Street
Louisville, KY



EQUIPMENT LAYOUT & FIRST FLOOR PLAN

SCALE: 1/4" = 1'-0"

EQUIPMENT SCHEDULE		
COOKING EQUIPMENT		
100	6-BURNER RANGE W/CONVECTION OVEN	IMPERIAL IHR-6-C
101	11'-0" EXHAUST HOOD W/HEATED MAKE UP AIR	CHEF-AIR
102	2-BURNER RANGE W/24" GRIDDLE, STD OVEN	IMPERIAL IHR-C24-2
103	48" SOLID FUEL CHAR-GRILL	801-4
104	50 LB. FRYER	IFS-50
105	60" EXHAUST HOOD (SOLID FUEL)	CHEF-AIR
106	GAS HOSES	DORMONT
107	SPARE	VARIES
REFRIGERATION		
200	WALK-IN COOLER/ DRY STORAGE AREA	CUSTOM
201	ICE MACHINE W/BIN	ICE-O-MATIC
202	ICE MACHINE W/BIN	KOLD DRAFT
203	SINGLE DOOR FREEZER	ASCEND
204	48" UNDERCOUNTER REFRIGERATOR W/DOORS	TRUE
205	60" UNDERCOUNTER REFRIGERATOR W/DRAWERS	TRUE
206	60" UNDERCOUNTER REFRIGERATOR W/DOORS	TRUE
207	60" REFRIGERATED SANDWICH STATION	TRUE
208	24" UNDERCOUNTER REFRIGERATOR	TRUE
209	60" BACK BAR REFRIGERATOR-GLASS SLIDING DR	TRUE
210	60" UNDERCOUNTER REFRIGERATOR W/DOORS	TRUE
211	48" UNDERCOUNTER REFRIGERATOR W/DRAWERS	TRUE
212	DRAFT KEG COOLER	BEVERAGE AIR
213	WINE REFRIGERATOR	TRUE
214	DROP-IN ICE CREAM FREEZER	ATLAS
215	TWO DOOR REFRIGERATOR	ASCEND
WARMING EQUIPMENT		
300	HEAT LAMP	TBD
301	SPARE	---
SHELVING		
400	WIRE SHELVING (5 SHELVES 4 POSTS)	NEXEL
401	WIRE SHELVING (5 SHELVES 4 POSTS)	NEXEL
402	WIRE SHELVING (5 SHELVES 4 POSTS)(COOLER)	NEXEL
403	WIRE SHELVING (5 SHELVES 4 POSTS)(DRY STORAGE)	NEXEL
404	SPARE	---
405	18" DOUBLE OVERSHELF CEILING MNT'D	FABRICATED
406	84" S/S WALL SHELF	TURBO-AIR
407	60" S/S WALL SHELF	TURBO-AIR
408	117" S/S WALL SHELF	ADVANCE
409	SPARE	---
410	WIRE SHELF W/WALL BRACKETS	NEXEL
411	42" SORTING RACK	ADVANCE
412	SPARE	---
PREPARATION EQUIPMENT		
500	"L" SHAPED TABLE 84"x66"x30" W/SINK	ADVANCE
501	SPARE	---
502	30"x72" S/S WORK TABLE W/DRAWER	ADVANCE
503	18" FILLER TABLE	TURBO AIR
504	SPARE	---
505	SPARE	---
506	COUNTER TOP WITH ENCLOSED TABLE W/SINK	ADVANCE
507	WAITRESS STATION	ADVANCE
508	24" WORKTOP	SUPREME METAL
509	SPARE	---
510	SPARE	---
511	SHEET PAN RACK	CHANNEL
512	SPARE	---
SINKS & CLEAN AREAS		
600	MOP SINK W/FAUCET	ADVANCE
601	MOP HOLDER	ADVANCE
602	WATER FILTER	ICE-O-MATIC
603	3-COMPARTMENT SINK W/PRERINSE	TURBO-AIR
604	HAND SINK	ADVANCE
605	GREASE TRAP (LOCATION TO BE DETERMINED)	TBD
606	CLEAN DISHTABLE	ADVANCE
607	SOILED DISHTABLE	ADVANCE
608	DISHMACHINE	CHAMPION
609	CONDENSATE HOOD	CHEF AIR
610	GLASS WASHER	CHAMPION
611	HAND SINK/BLENDER STATION	SUPREME METAL
612	DIPPER WELL	GRINDMASTER
613	HAND SINK	ADVANCE
614	SPARE	---
SERVING EQUIPMENT		
700	P.O.S.	BY OWNER
701	ICE TEA BREWER/DISPENSER	VENDOR
702	TEA URN	VENDOR
703	COFFEE BREWER/DISPENSER	VENDOR
704	ICE AND WATER UNIT, DROP IN	VENDOR
705	36" ICE BIN COCKTAIL STATION W/DIVIDED ICE BIN	RANDELL
706	48" ICE BIN COCKTAIL STATION W/DIVIDED ICE BIN	SUPREME METAL
707	ESPRESSO MACHINE	BY OWNER
708	ESPRESSO GRINDER	BY OWNER
709	ICE AND WATER UNIT, DROP IN	RANDELL
710	WAITRESS STATION (CASEWORK)	BY OWNER

FIRST FLOOR
PLAN

number: Decca.dwg
date: February 08, 2011
revised: October 28, 2011
by: Scott W. Rudd
checked:
by:

drawing no.
EQ-1

sheet no.
2 of 6